



Supreme Precision Manufacturing Co.,
LTD

228/49 Moo 6

Omnoi, Kratumban

Samutsakhorn 74130

Table of Contents

About our Company	3
About our People	4
CNC Milling	5
CNC Turning	6
Wire Cutting	7
Welding/Brazing/Soldering Services	8
Precision Grinding Services	9
Assembly Services	10
SPM QC	11
SPM Certification	12
Outsourced Castings	13
Outsourced Fabrications	14
Outsourced Surface Treatments	15
Contact us	16

About our Company

www.spmasia.com/AboutOurCompany.php

Established in 2001, SPM is an ISO 9001:2015 certified company that has been providing low to mid volume high precision contract manufacturing services to our customers in Asia-Pacific, Europe and North America for over 14 years.



From CNC machining of parts to providing complete machine assemblies, these services include:

- High precision CNC milling and turning.
 - SPM has a variety of 3 and 4 axis CNC vertical and horizontal mills from some of the world's best machine tool manufacturers.
 - Likewise, we have a variety of world class quality CNC lathes.
- Design development support as necessary.
- Sub-vendor qualification and management.

SPM can offer our customers the quality of world class manufacturing and engineering technology along with the cost savings possible in a low labor cost country.

We have experience machining a variety of materials:

- Mild steels.
- Tool steels
- Stainless steels
- High strength alloy steels.
- Exotic high nickel alloys.
- Engineering plastics.
- Aluminum alloys.

About our People

www.spmasia.com/AboutOurPeople.php

There are many great people at SPM who contribute everyday to our success, and we regret that we don't have the space to talk about each and every one of them here.

But here are a few of our people you're most likely to have contact

Yong Khor Wah:

email: yongkhor@spmasia.com

Graduated 1988 with a Bachelor of Science in Electrical Engineering with University Honors from Southern Illinois University ,USA.



James (Jim) Laughton:

email: jlaughton@spmasia.com

Graduated in 1982 with a Bachelor of Science in Mechanical Engineering with University Honors from Portland State University, USA.



Unnop Tabida:

email: unnop@spmasia.com

Graduated in 1997 with a Bachelor of Engineering from King Mongkote Institute of Technology, North Bangkok, Thailand.



CNC Milling

www.spmasia.com/CNCMilling.php

SPM Precision CNC Milling Services

Mach Type	Model	Axes	X (mm)	Y (mm)	Z (mm)	Units
Horiz CNC Mill	Mazak HCN 50002	3 Axis	730	730	740	1
Vert CNC Mill	Mazak VCN 410 A	3 Axis	550	400	500	2
Vert CNC Mill	Mazak VCN 410 B	4 Axis	750	400	500	1
Vert CNC Mill	Mazak VCN 410 B	3 Axis	750	400	500	2
Vert CNC Mill	Mazak VCN 410 A	3 Axis	560	410	500	2
Vert CNC Mill	Mazak VCN 410 B-2	4 Axis	762	410	510	1
Vert CNC Mill	Mazak VCN 510 C-2	4 Axis	1,050	510	510	1
Vert CNC Mill	Makino FNC 106-A 30	3 Axis	1,000	600	500	1
Vert CNC Mill	Enshu 450 V	3 Axis	800	450	500	1
Vert CNC Mill	Enshu VMC 40	3 Axis	550	400	450	1
Vert CNC Mill	Enshu DT Center	3 Axis	500	400	300	1
Vert CNC Mill	Enshu EV 650	3 Axis	1,300	650	660	1
Vert CNC Mill	Kiwa Excell Center 4	3 Axis	400	300	350	1
Vert CNC Mill	OKK PVC 40	3 Axis	700	400	400	1

Printed from www.spmasia.com on Tuesday, 2 October 2018 at 18:11:10



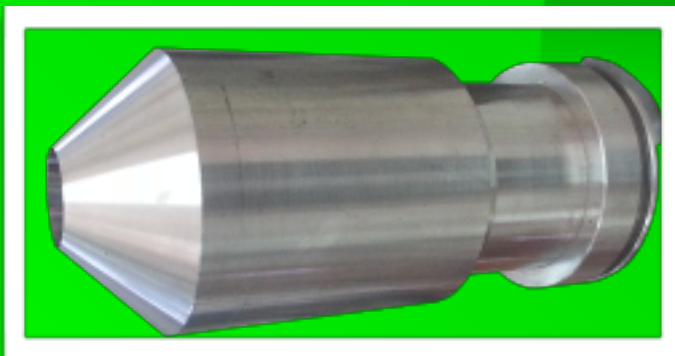
CNC Turning

www.spmasia.com/CNCTurning.php

SPM Precision CNC Lathe Turning Services

Machine	Model	Working Diameter	Working Length	Units
CNC Lathe	Mazak QTN 150/500	200 mm	600 mm	3
CNC Lathe	Mazak QTN 150-2/500	190 mm	330 mm	1
CNC Lathe	Mori Seiki SL-20	200 mm	450 mm	1
CNC Lathe	Mori Seiki SL-35	350 mm	750 mm	1
CNC Lathe	Mori Seiki SL-15 MC	200 mm	500 mm	1

Printed from www.spmasia.com on Tuesday, 2 October 2018 at 18:18:7



Wire Cutting

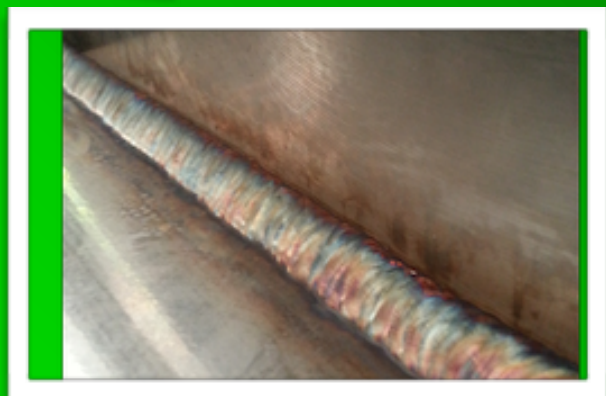
For sharp corners and other difficult to machine feature, SPM has a wire cutting capability.



Welding/Brazing/Soldering Services

www.spmasia.com/Welding.php

SPM can offer a variety of high quality MIG and TIG welding services along with brazing and soldering



Precision Grinding Services

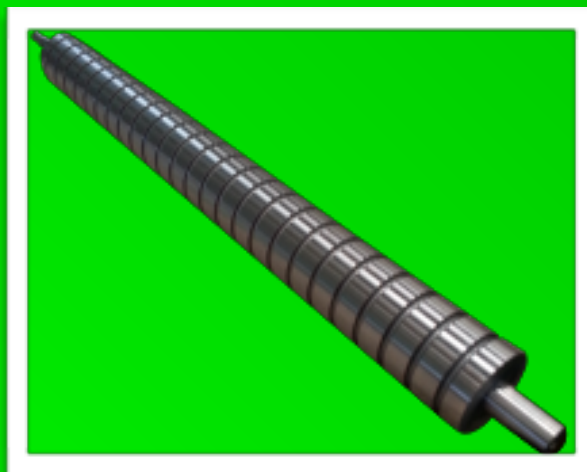
www.spmasia.com/Grinding.php

SPM offers both surface and OD grinding capabilities

SPM Precision Grinding Services

Machine	Model	X	Y	Z	Units
Surface Grinder	Okamoto PSG 64DX	1,000 mm	400 mm	200 mm	5
Cylindrical Grinder	Okamoto OGM-3100U	1,000 mm	Ø300 mm	---	1

Printed from www.spmasia.com on Tuesday, 2 October 2018 at 18:43:31



Assembly Services

www.spmasia.com/Assembly.php

SPM provides manual assembly of mechanical components, machines and electrical control equipment from small sub-assemblies up to complete machine builds.

We supply or purchase some or all of the parts depending on our customer's needs. This includes control panels, control panel wiring and PLC programming when necessary. Take a look at some of the assemblies we do for our current customers.



SPM QC

www.spmasia.com/QC.php

SPM has a very capable, well staffed and well equipped Quality Control Department to ensure that customer specifications are met.

Quality is integral and built into our process. Even so, we always check.

The equipment list below is always evolving to meet our customers'

SPM QC

Description	Range	Quantity	Accuracy
	(mm)		(mm)
CMM		1	0.001
x:	0 - 460		
y:	0 - 570		
z:	0 - 420		
VMM		1	0.001
x:	0 - 300		
y:	0 - 200		
z:	0 - 150		
Microscope		1	60X
x:	0 - 200		
y:	0 - 75		
Micro Hite	0 - 400	2	0.001
Surface Roughness Tester	µm 0.1 - 12.5	1	µm 0.02
Digital Outside Micrometer	0 - 150	28	0.001
Outside Micrometer	0 - 300	9	0.010
Inside Micrometer	5 - 30	1	0.010
Digital Depth Micrometer	0 - 150	3	0.001
Vernier Caliper	0 - 2,000	1	0.050
Vernier Caliper	0 - 1,000	1	0.020
Vernier Caliper	0 - 600	3	0.050
Vernier Caliper	0 - 200	13	0.020
Digital Caliper	0 - 600	1	0.010
Digital Caliper	0 - 300	2	0.010
Digital Caliper	0 - 200	63	0.010
Digital Caliper	0 - 150	1	0.010
Dial Caliper	0 - 300	1	0.020
Dial Caliper	0 - 200	2	0.020
Dial Caliper Gage	15 - 35	1	0.010
Inside Caliper Gage	20 - 150	2	0.010
Parallel Pin	0.533 - 22.025	40 Sets	0.001
Plug Gage	12.68 - 80	56	0.001
Gage Block	1.005 - 100	3	0.001
Gage Block	125 - 500	1	0.001
Glass Scale	0 - 50	1	0.100
Precision Surface Plate	1,500 X 1,000	1	0.001
Precision Surface Plate	1,200 X 1,150	1	---
Precision Surface Plate	520 X 820	1	---
Square Master	350 X 350	1	0.001
Square Master	200 X 160	1	0.002
Setting Ring	2.000 - 175.001	39	0.001

SPM 9001:2015 Certification

www.spmasia.com/Certification.php

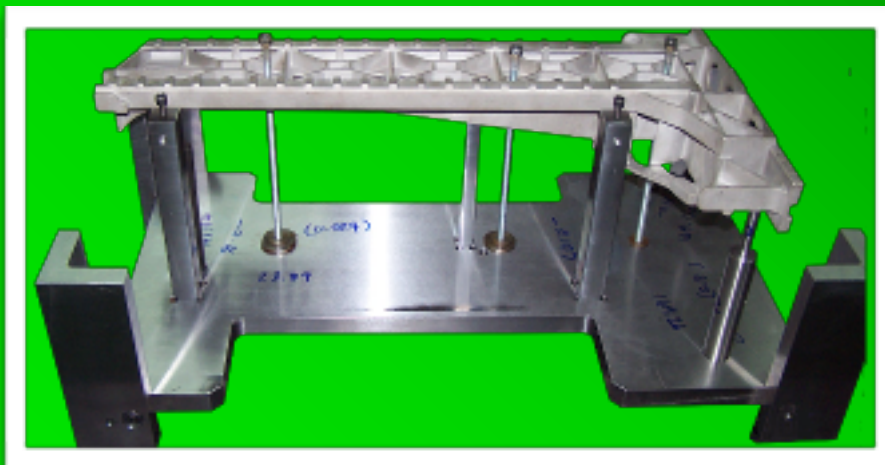
Of course we subject our internal processes to outside review to be sure we are conducting our business according to sound business practices



Outsourced Castings

www.spmasia.com/Castings.php

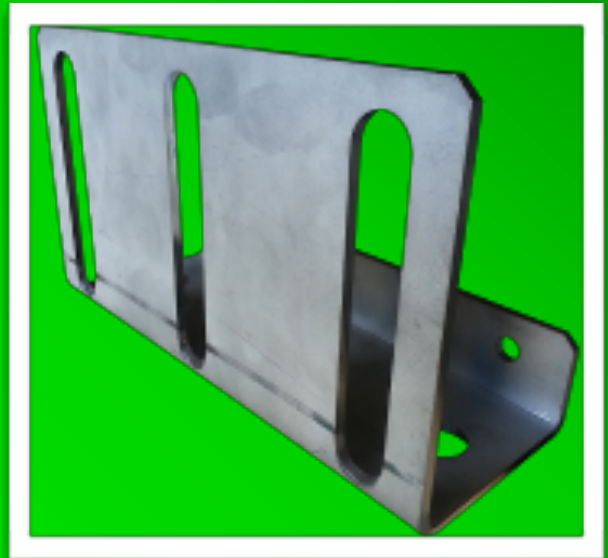
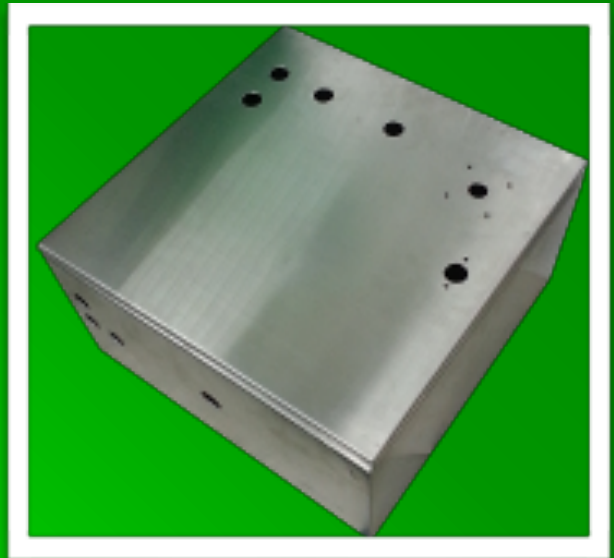
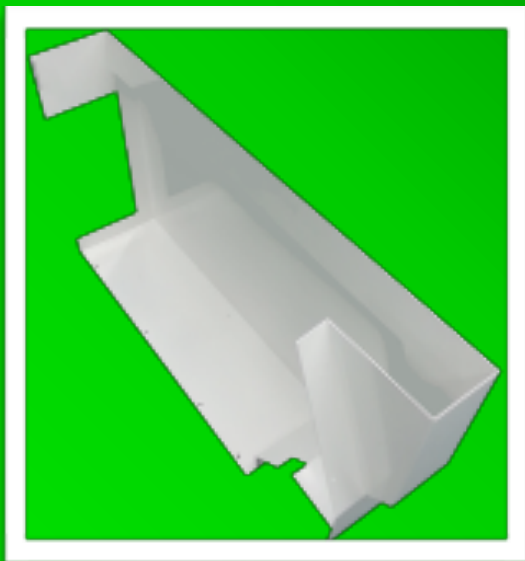
SPM sources and machines castings in a variety of materials.



Outsourced Fabrications

www.spmasia.com/Fabrication.php

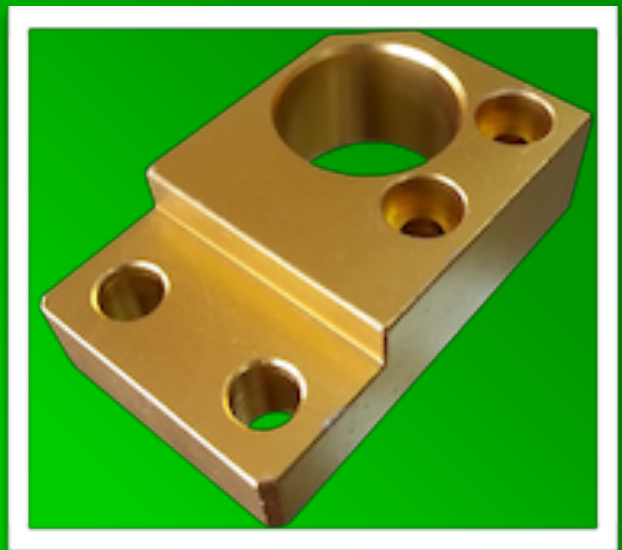
SPM can source a variety of fabricated parts and assemblies



Outsourced Surface Treatments

www.spmasia.com/SurfaceTreatments.php

A variety of surface treatments such as plating, powder coating and anodizing are available.



Contact Us

www.spmasia.com/Contact.php

For sure we'd like to hear from you. The best way to do that is to visit the Contact page on our web site, but we're also here for you through other methods.

You may contact Yong Khor Hua at yongkhor@spmasia.com

You may contact Jim Laughton at jlaughton@spmasia.com

You may contact Unnop Tabida at unnop@spmasia.com

